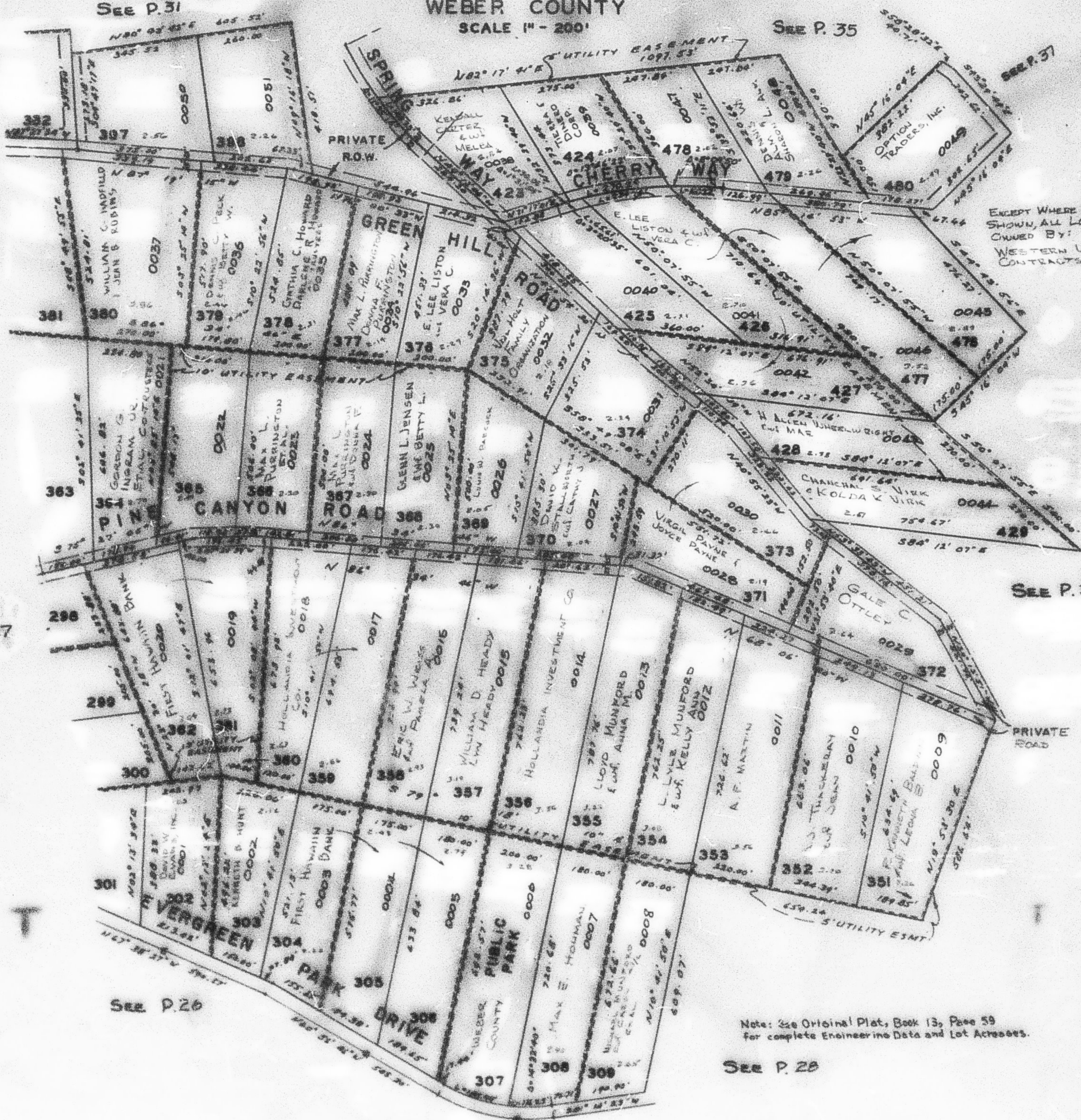


PART OF SEC. 29, 30, 31, & 32, T.7N., R.3E., S.1B.&M.
EVERGREEN PARK SUBDIVISION NO. 1

TAXING UNIT - 58
 LOTS 302 - 309, 351 - 362, 364 - 390, 397 - 398, 423 - 429, 478 - 480

PREFIX: 23-033

WEBER COUNTY
 SCALE 1" = 200'



EXCEPT WHERE OTHERWISE SHOWN, ALL LOTS ARE OWNED BY: WESTERN LAND CONTRACTS CO., INC.

Note: See Original Plat, Book 13, Page 59 For complete Engineering Data and Lot Accesses.

SEE P. 28